



TSB-TB02

Release Bearing Installation

This clutch kit requires the provided release bearing to be pressed onto the existing bearing carrier. It is essential that this is done correctly to avoid damage to the bearing. Always inspect components to be re-used for signs of damage and/or wear.

The release bearing should be pressed onto the existing bearing carrier using a purpose made collar or socket that is the same outer diameter as the inner race of the bearing. This will prevent excessive load being applied to the face of the bearing. A small amount of grease on the bearing carrier can be used to aid in fitting the new release bearing.

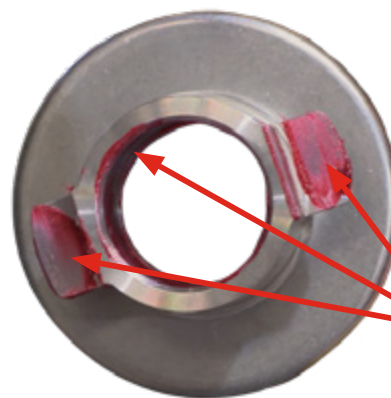


Bearing Inner Race

Bearing Carrier Lubrication

With a release fork or cross shaft, it is important that all contact points are lubricated correctly. This includes but is not limited to: where the fork contacts the bearing carrier, the bore of the bearing carrier, gearbox nose cone, pivot ball and where the slave pushrod contacts the fork.

Failure to correctly lubricate these components can result in operational noises and premature wear.



Lubrication Points

LEADING BRANDS

CLUTCHPRO CLUTCHPRO
GOKMERBOM

